

Restanques

Rebecca Morel-Maroger

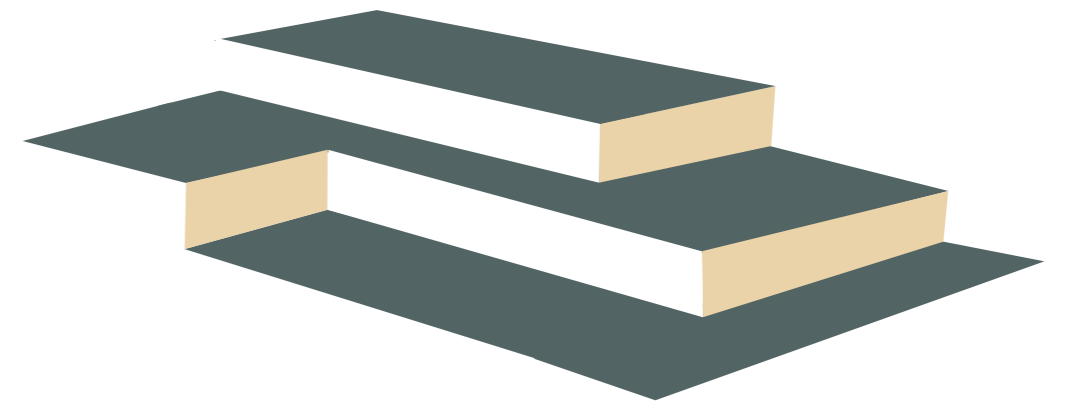
Les Restanques désignent des murs de retenues en pierre sèches qui retiennent l'eau et protègent les cultures.

En paliers successifs, elles **structurent et adoucissent** les paysages escarpés.

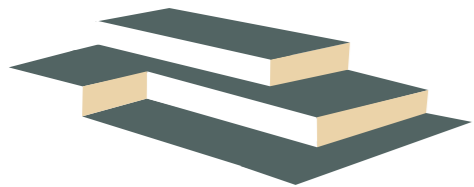
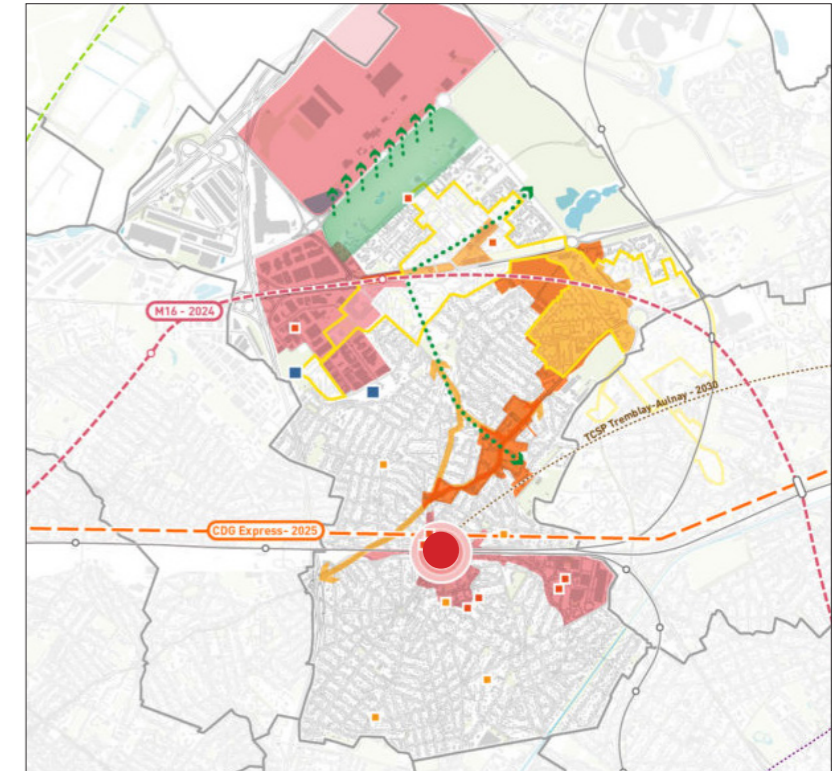
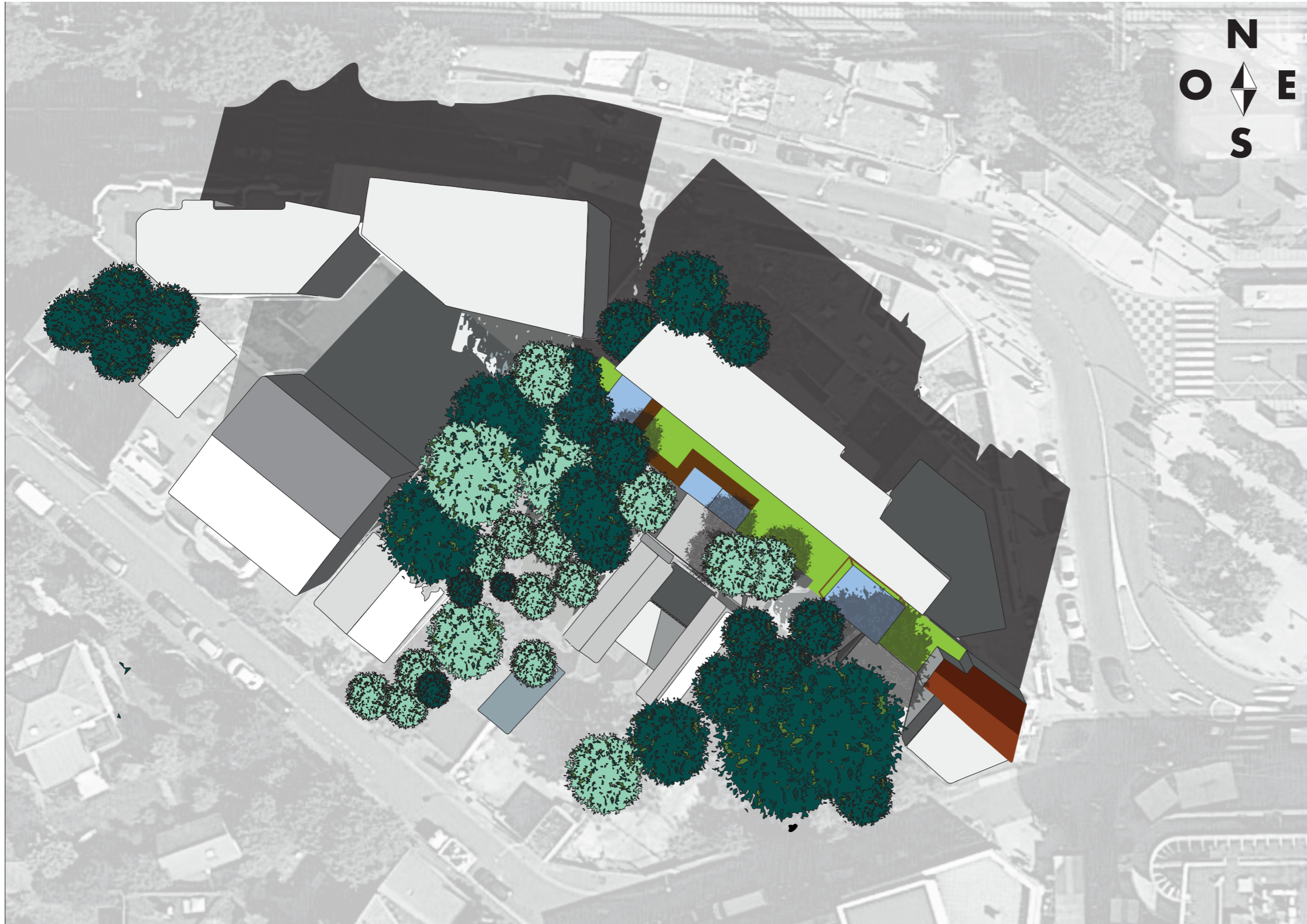
Dans ce même principe, les restanques en bois dans la maison d'artistes créent des **transitions douces** entre les différentes fonctionnalités des espaces.

Grâce à elles, la maison d'artistes **restanques** devient un lieu d'accueil qui privilégie la fluidité des passages et des échanges et le calme visuel (matériaux naturels et installations légères).

C'est un lieu de vie pour trois artistes en résidence, éphémère, singulier et confortable.

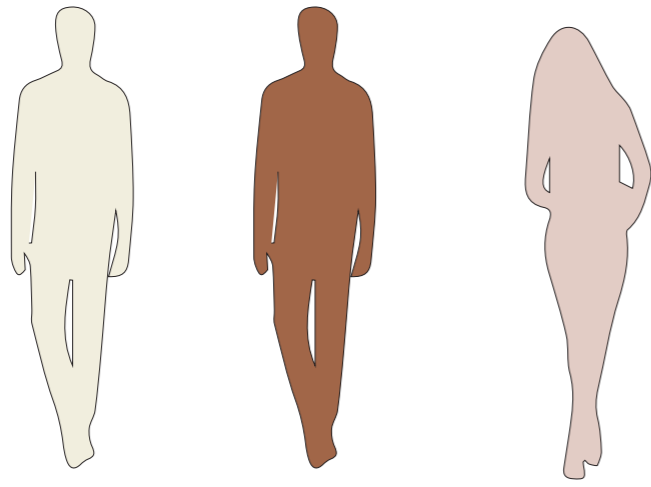


Le contexte urbain

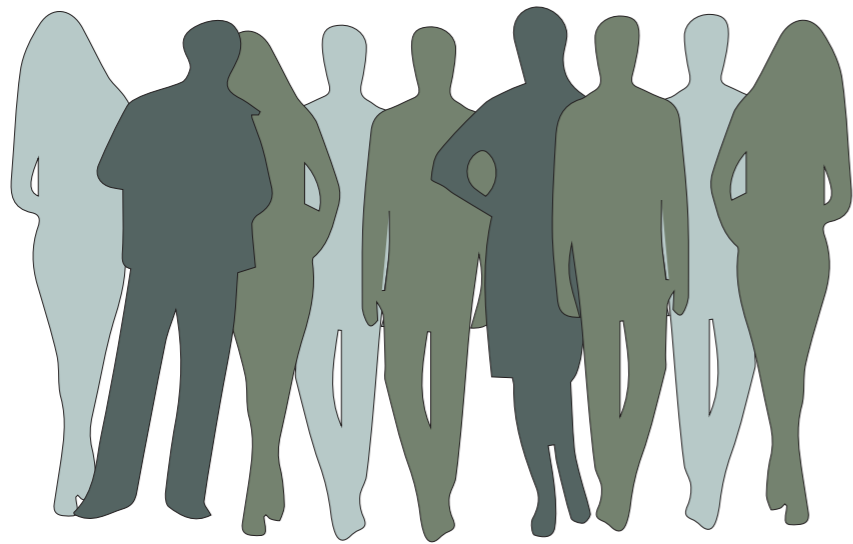


- Le 10 route de Bondy, à Aulnay-sous-bois, en Seine Saint Denis
- A 200m de la gare, directement connectée au Grand Paris
- La parcelle est étroite, l'éclairage naturel y est faible

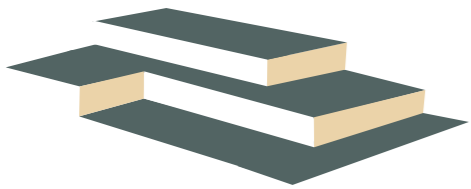
Le programme



1 peintre 1 musicien 1 tailleuse de pierre



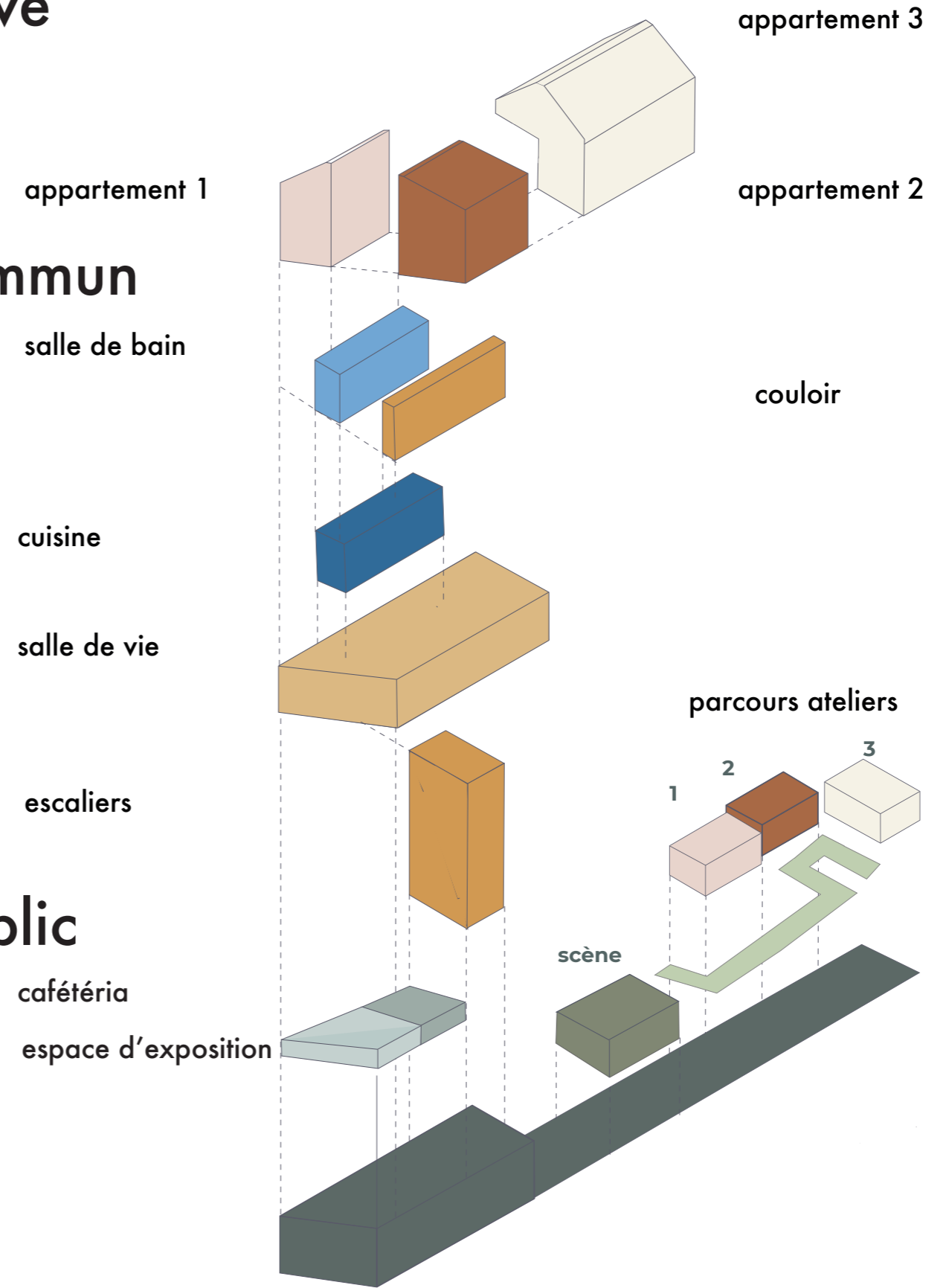
les voisins, les visiteurs



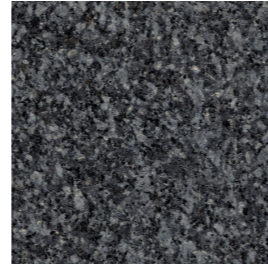
privé

commun

public



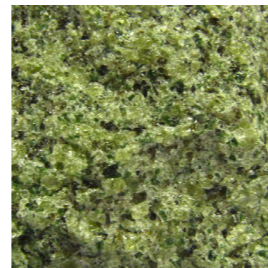
Le Totem sonore



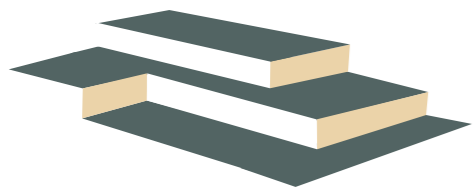
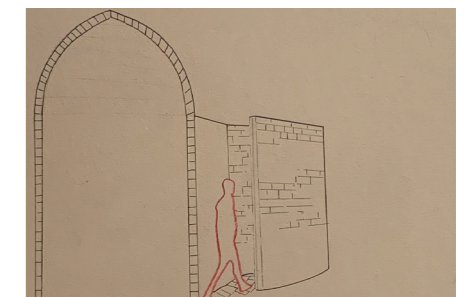
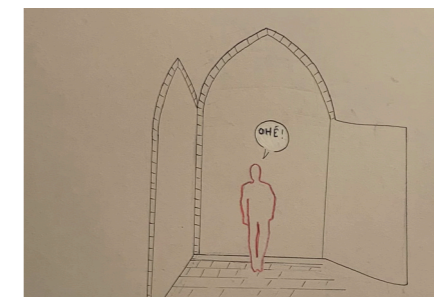
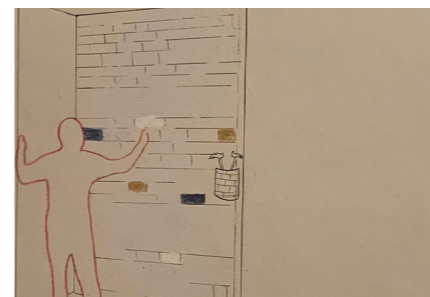
Le Totem est un lieu d'expérience **sensorielle**, intime à chacun.



Le visiteur découvre les sonorités des pierres en les tapant à l'aide d'un petit marteau.
Il fait sonner les pierres à la manière des **sonneurs de pierres**.

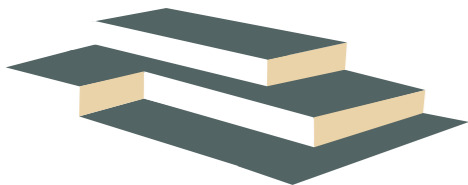
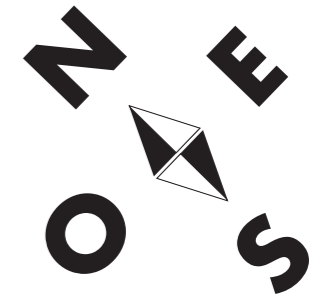


Ensuite, il est immergé dans une seconde partie du totem où il va pouvoir y faire **résonner sa voix**, grâce au dôme en forme d'ogive.



RDC

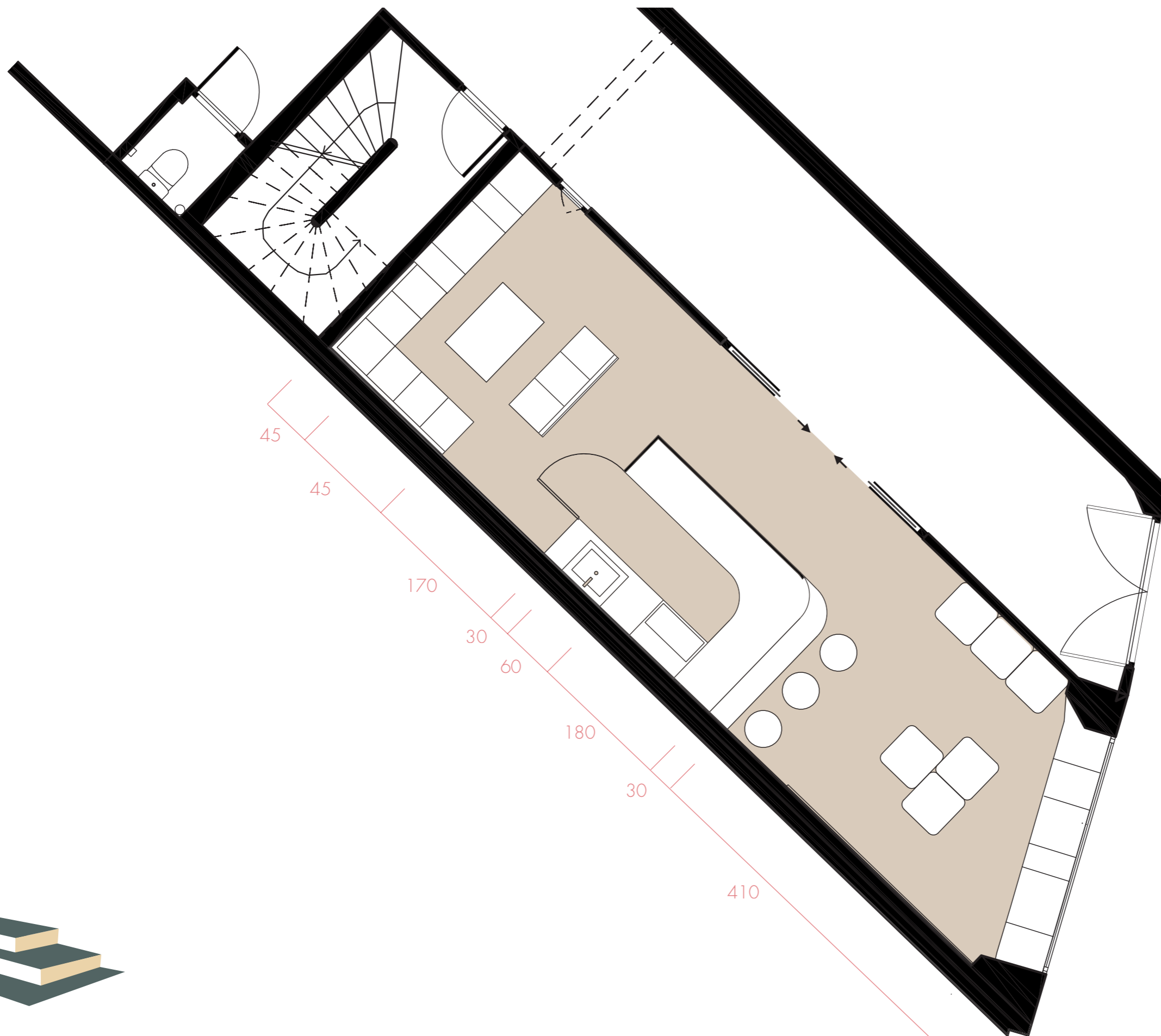
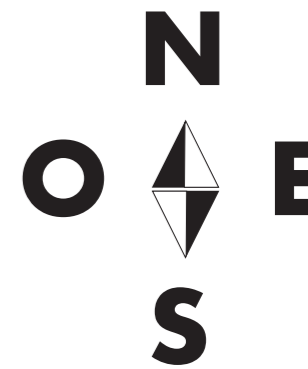
l'intérieur et le jardin



1/200



RDC



45

45

170

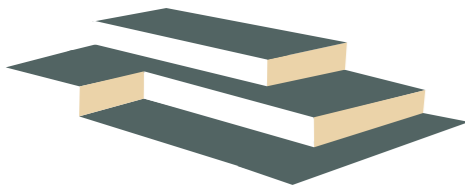
30

60

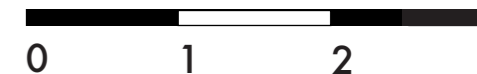
180

30

410

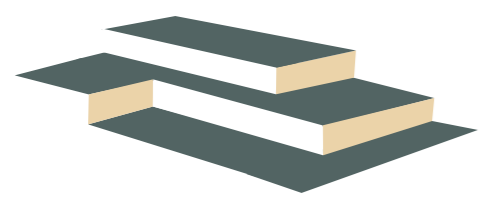
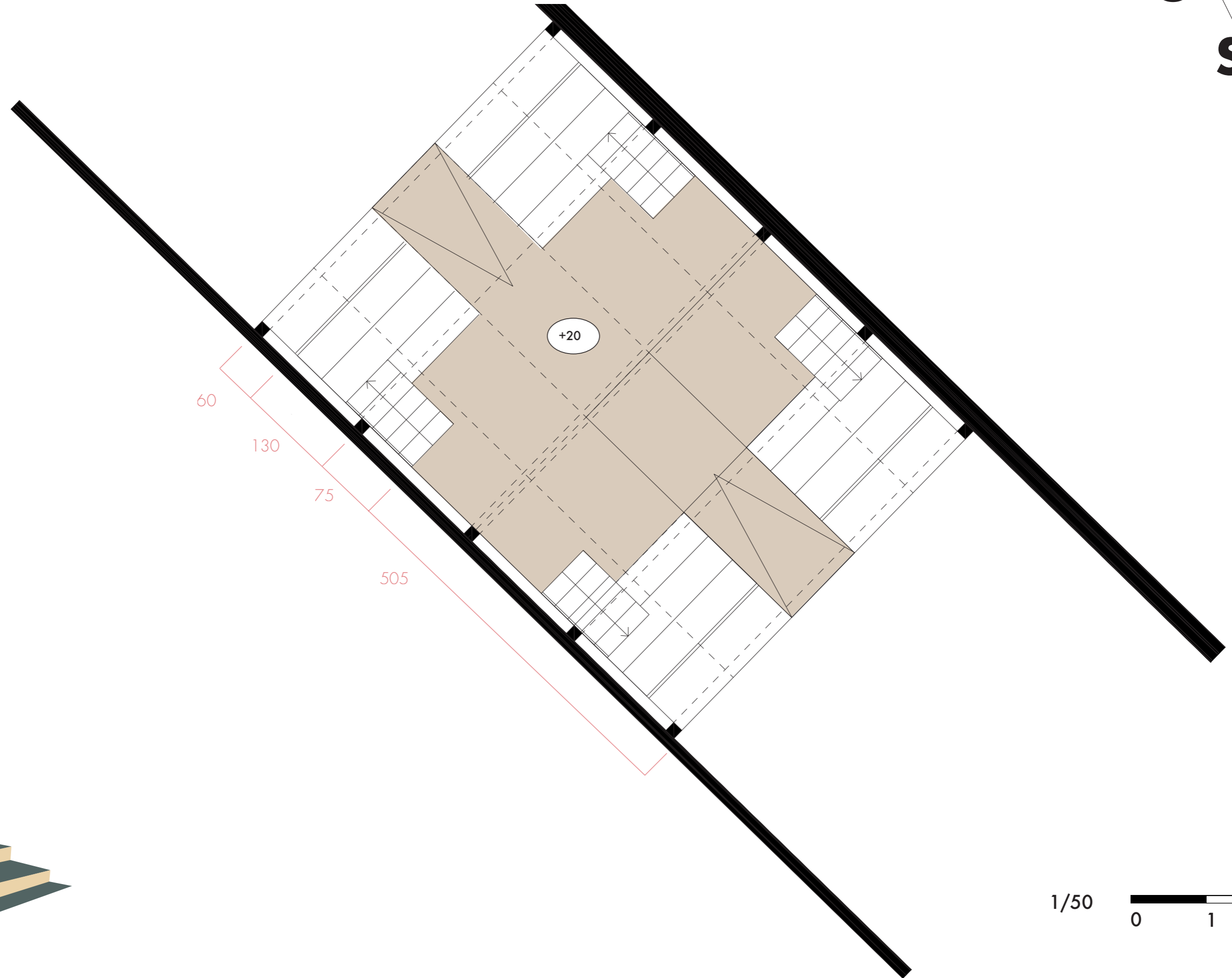


1/50



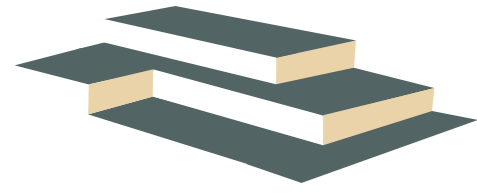
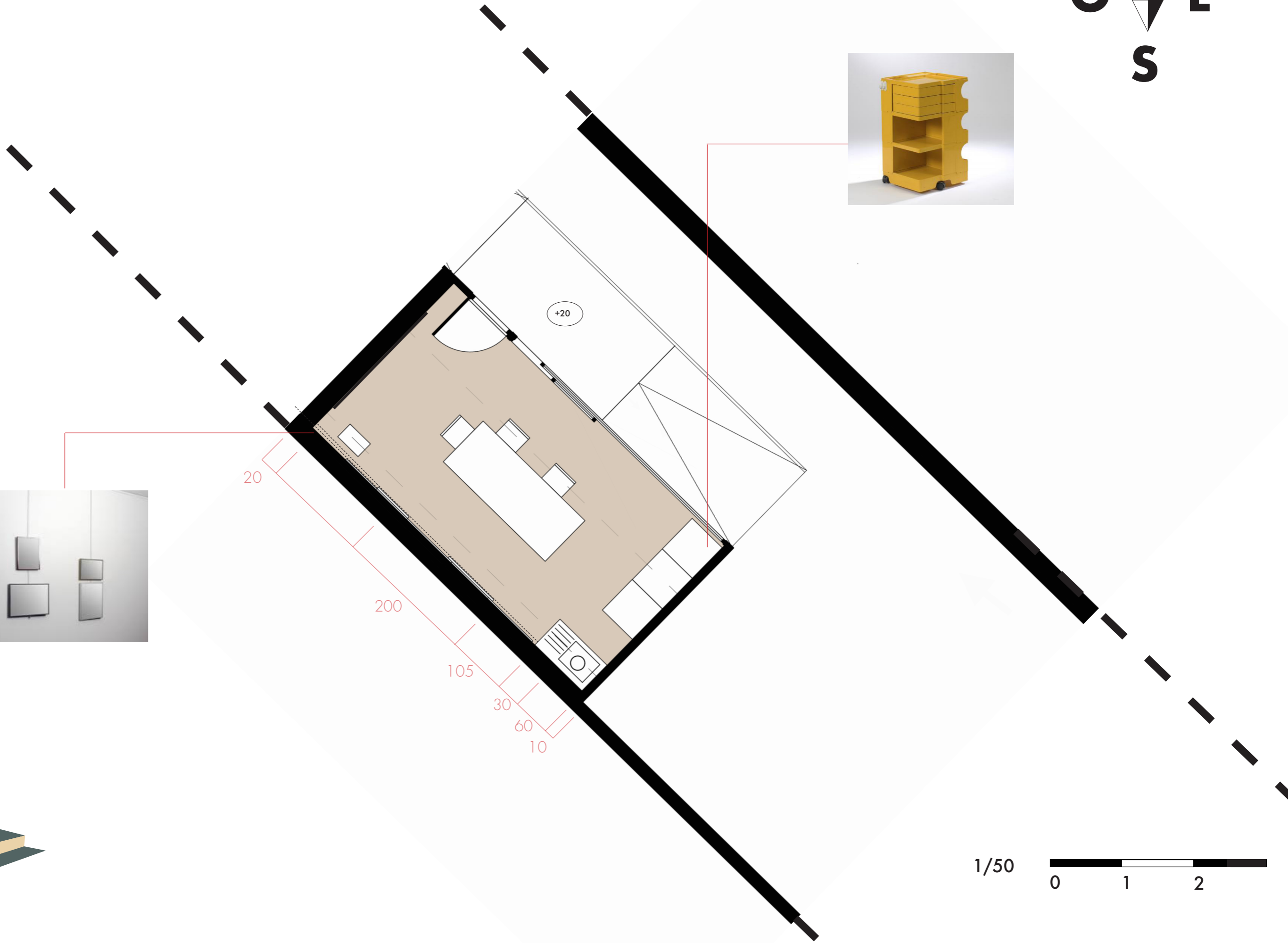
RDC

le jardin



RDC

le jardin



20

200

105

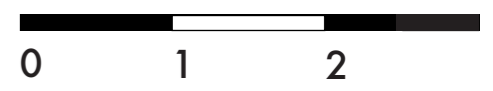
30

60

10

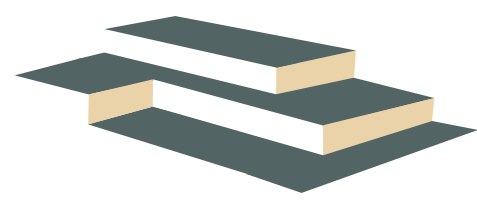
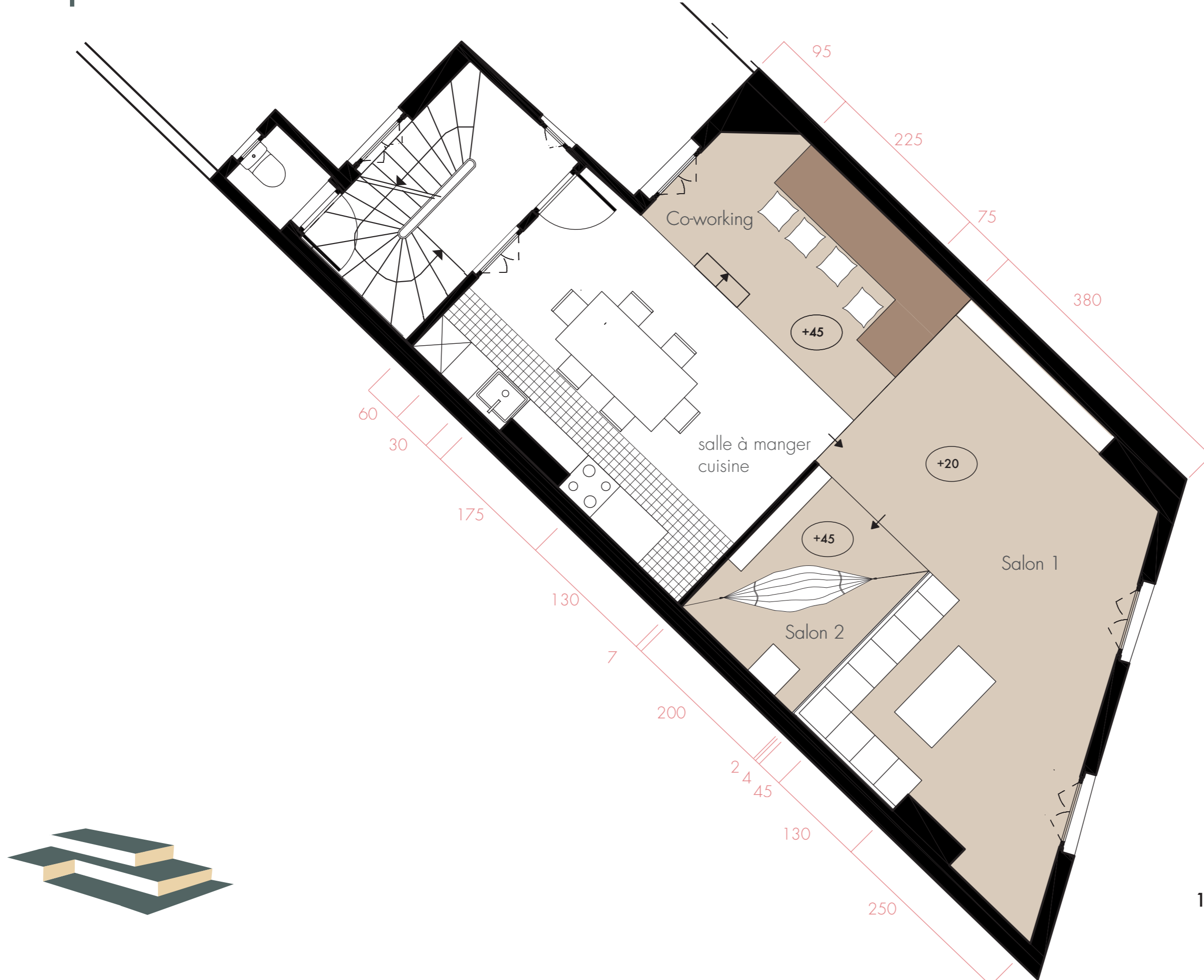
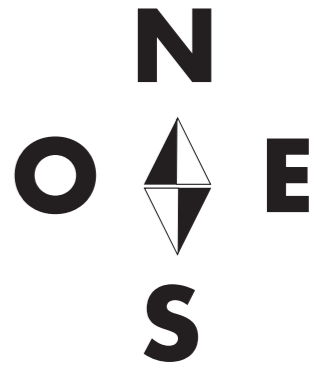
+20

1/50

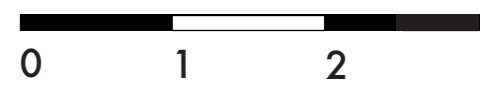


R+1

l'espace commun

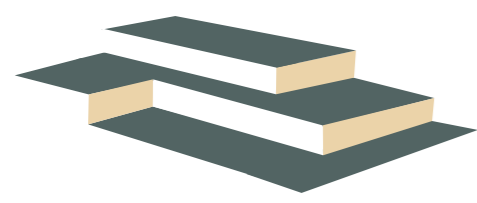
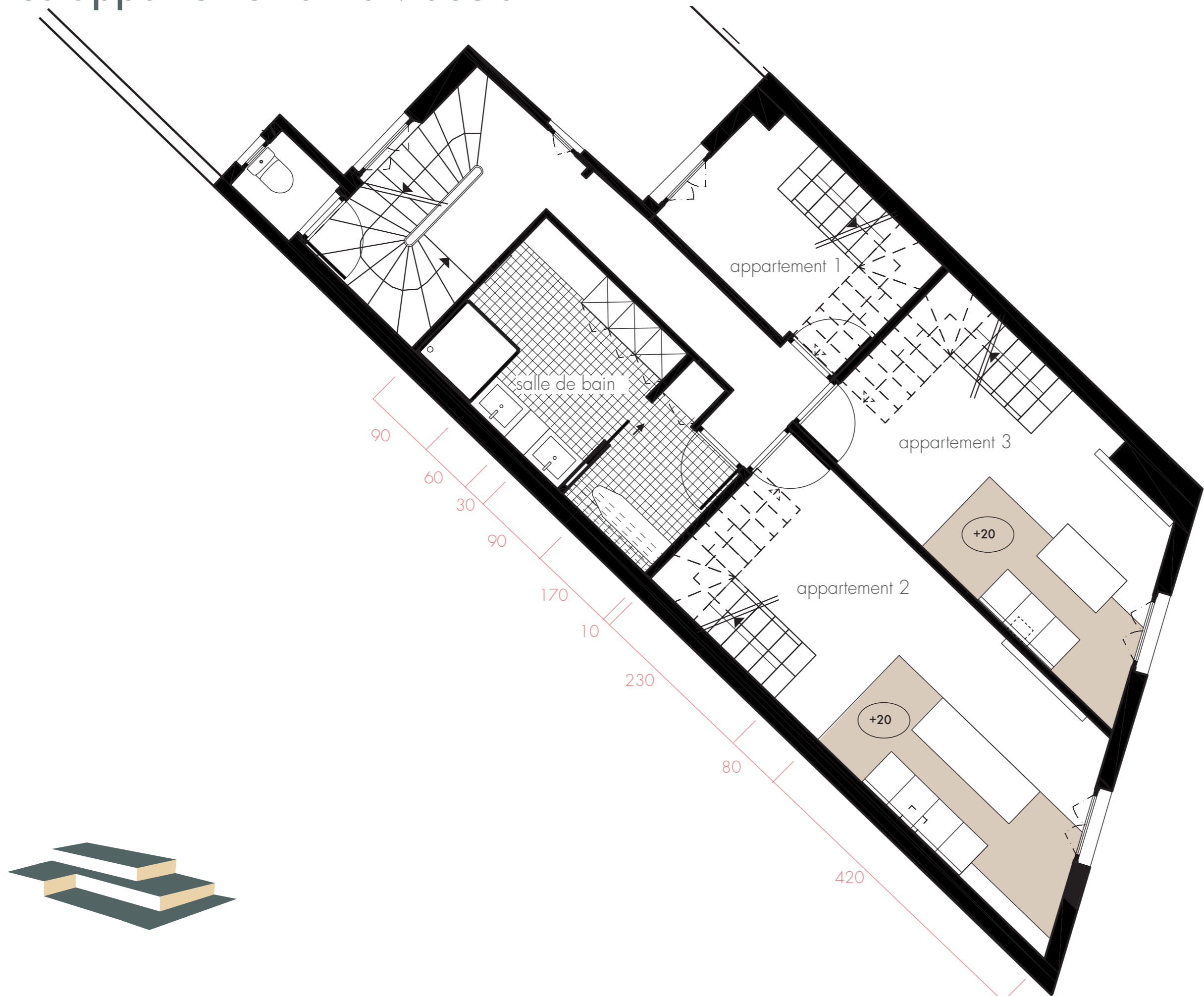
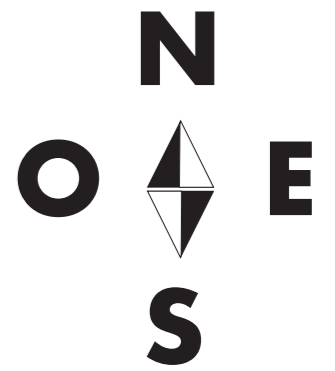


1/50

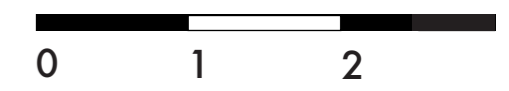


R+2

les appartements individuels

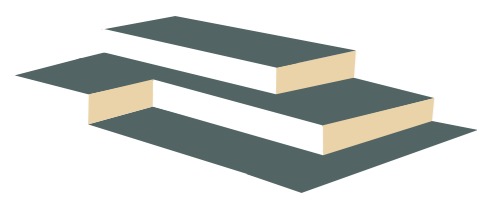
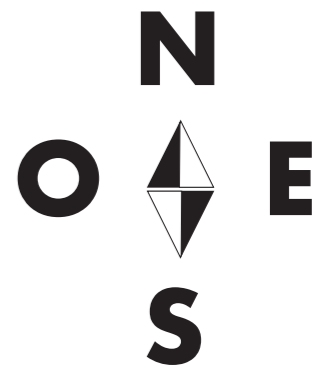


1/50

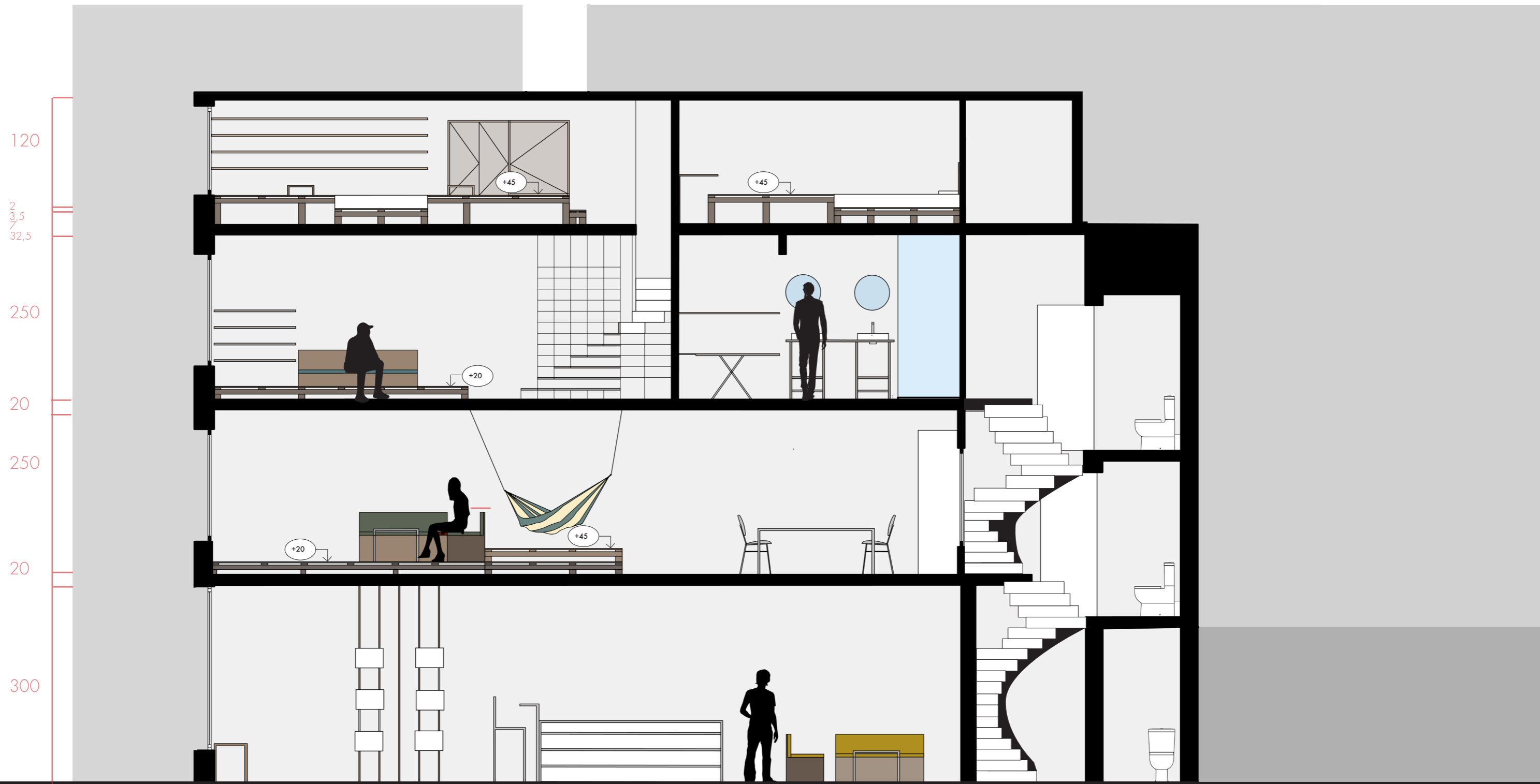


R+3

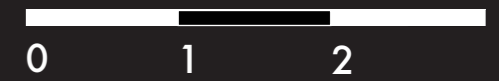
les appartements individuels



Coupe longitudinale

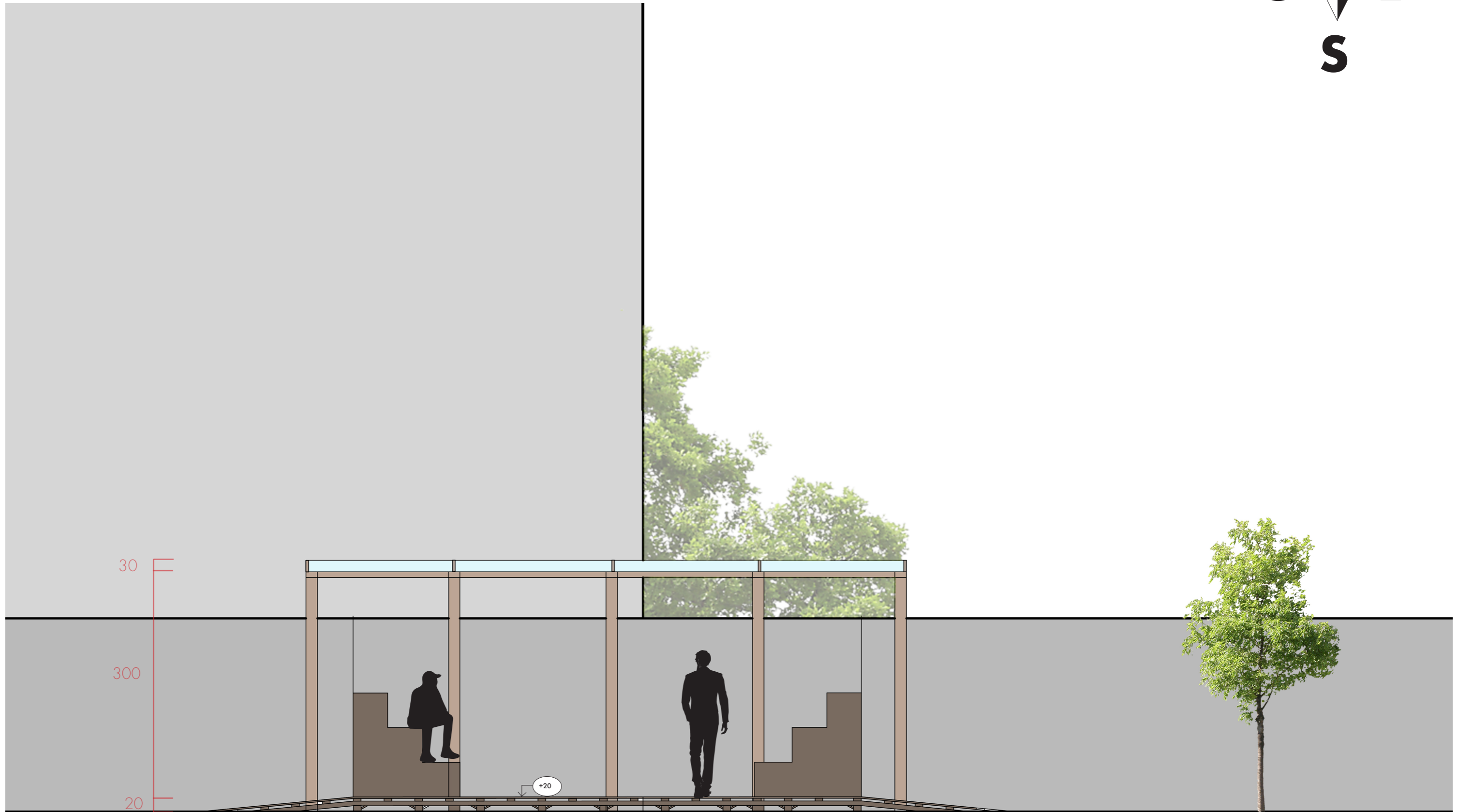


1/50



RDC

le jardin

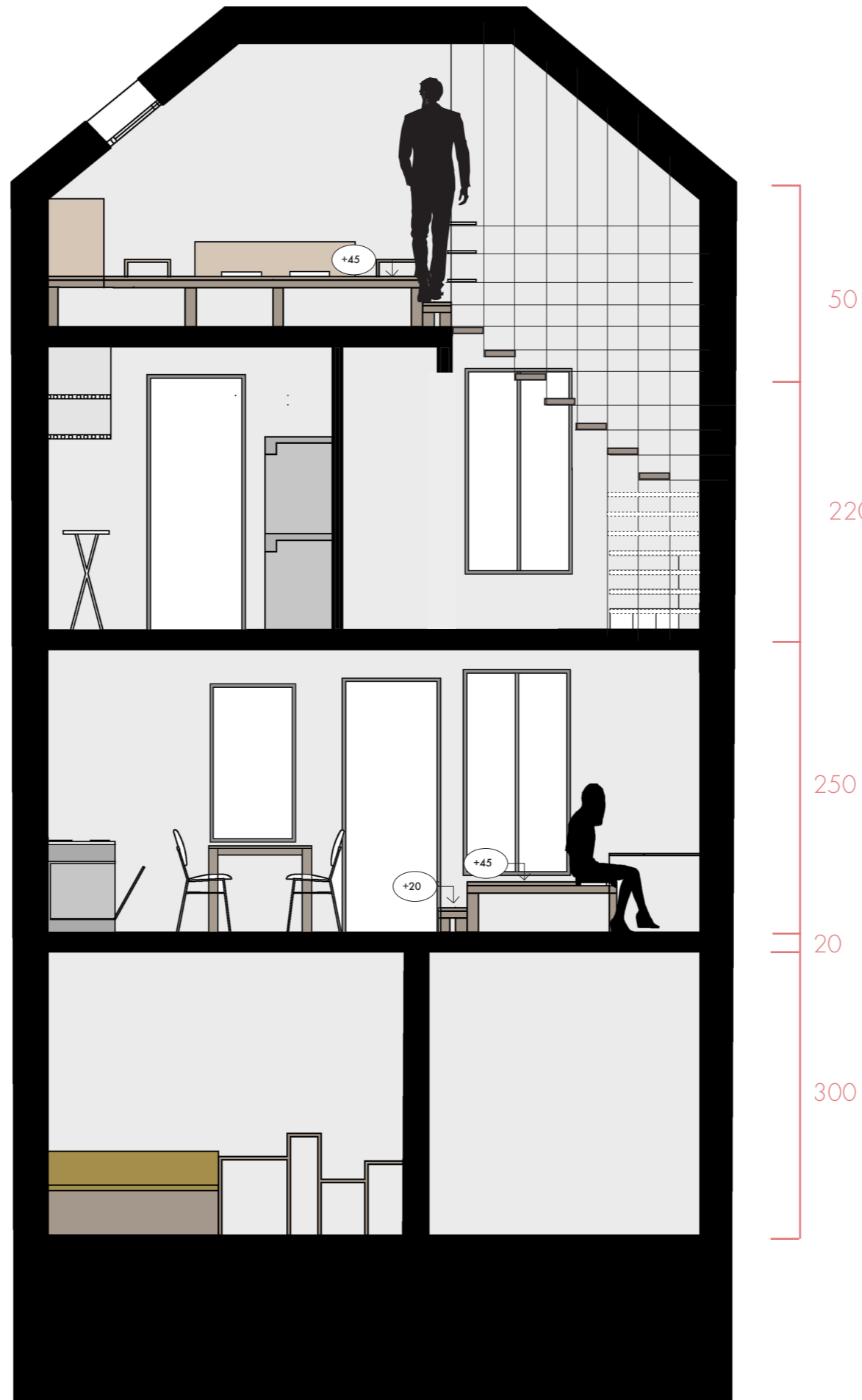


30
300
20

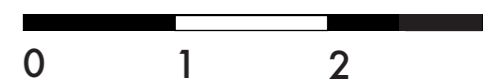
+20

1/50
0 1 2

Coupe transversale

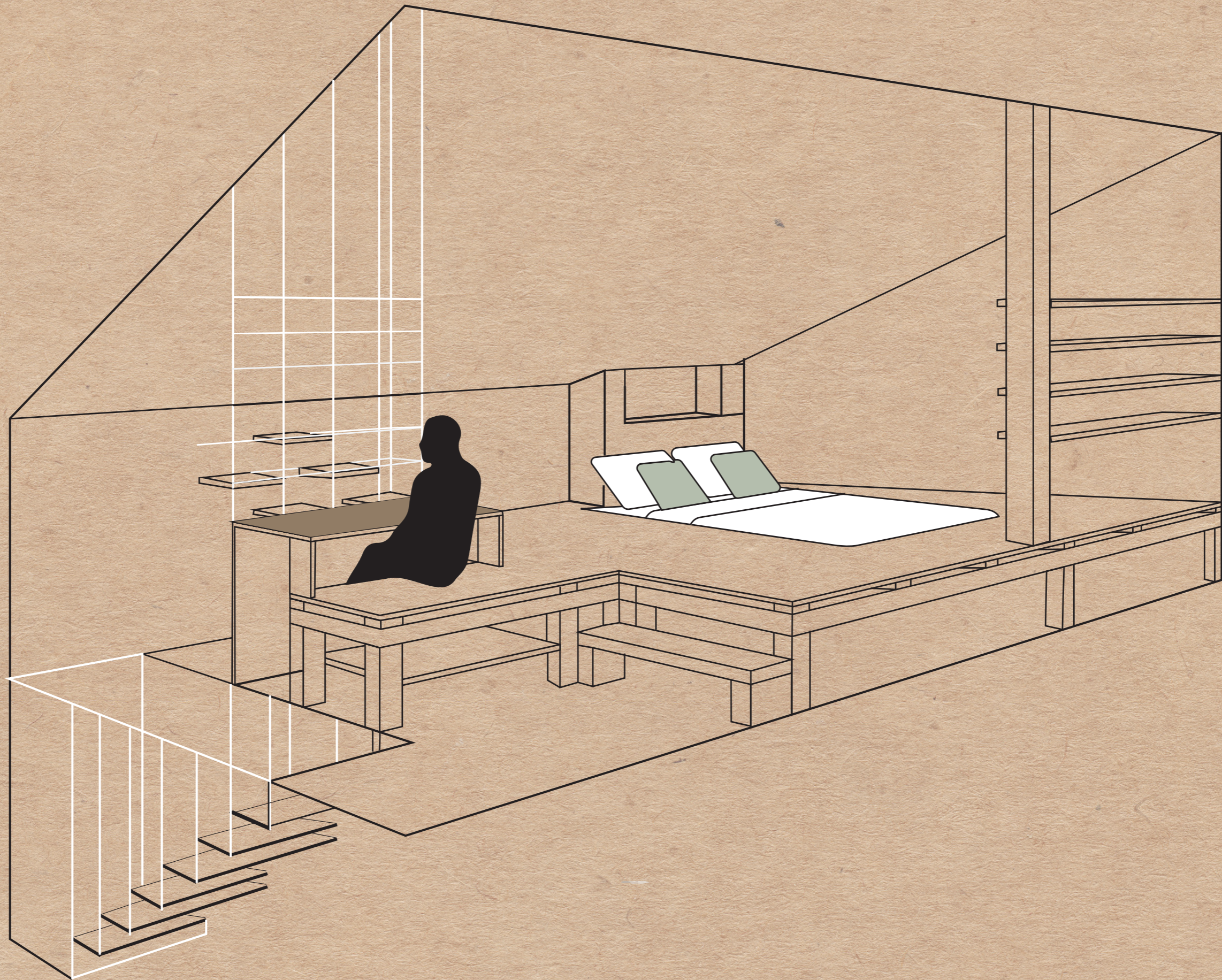


1/50

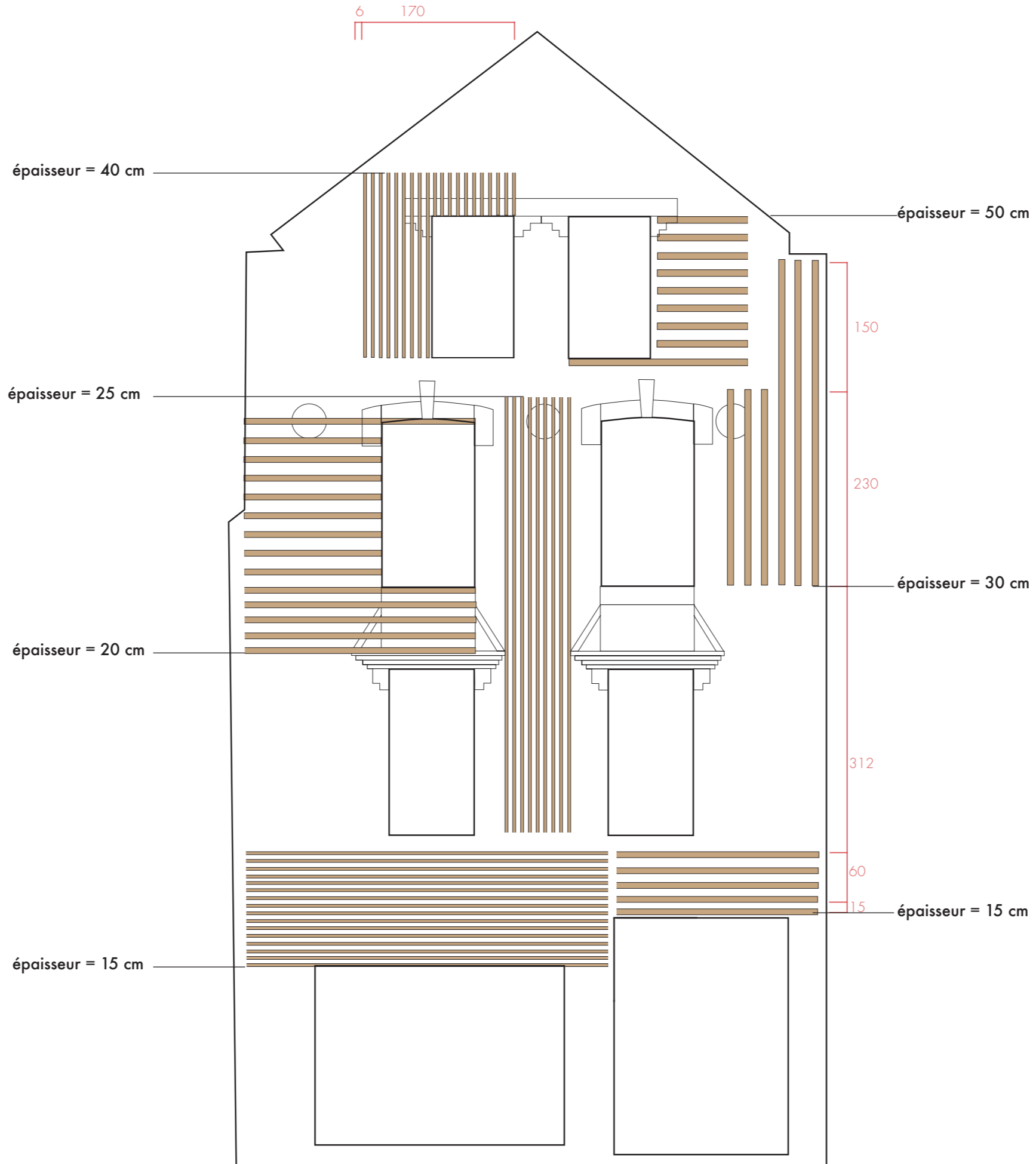


R+3

la chambre de l'appartement 3



La facade



fixation grâce à des montants métalliques

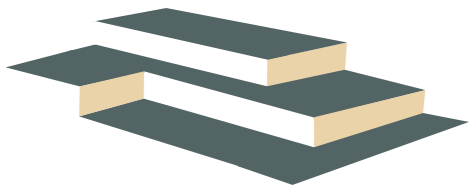
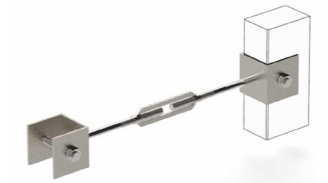
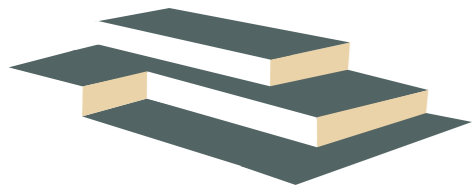
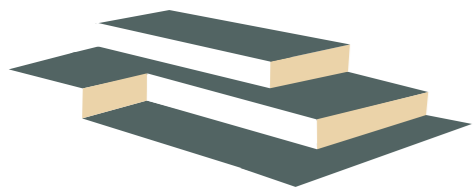
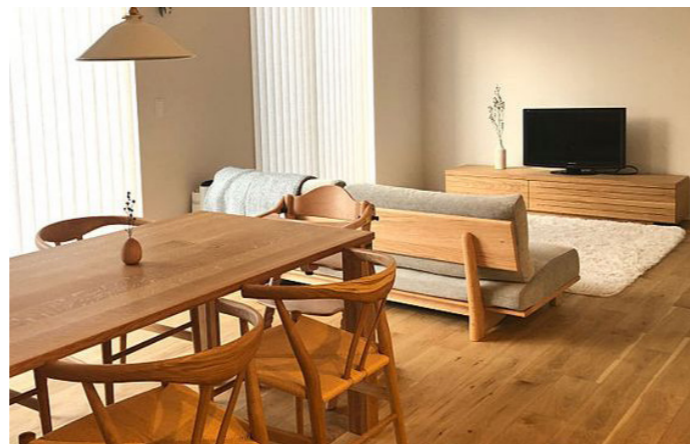
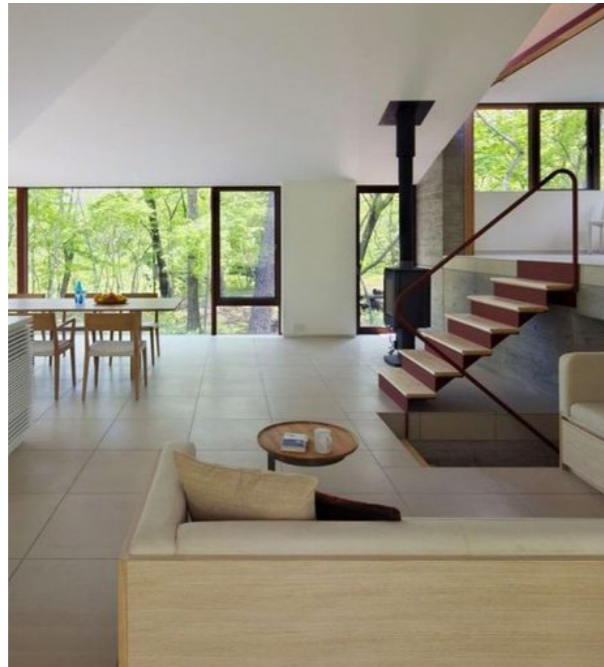


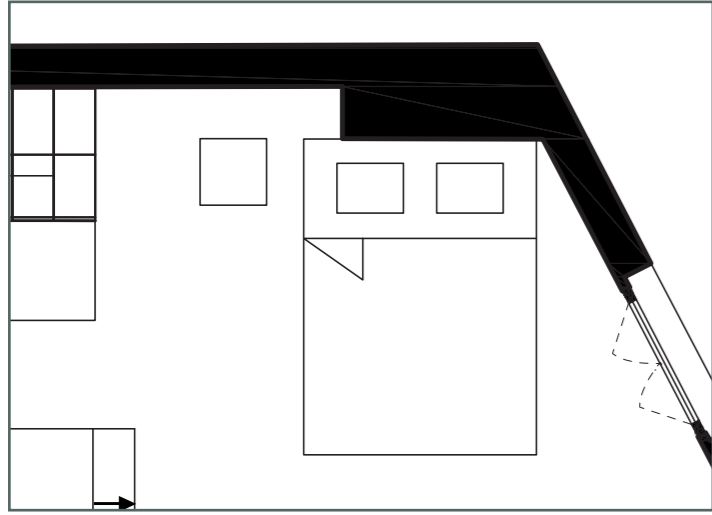
Planche matériaux



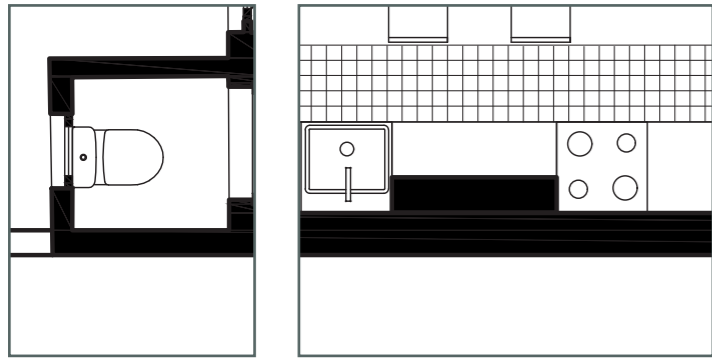
Références visuelles



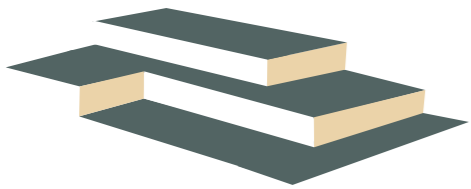
Intégration



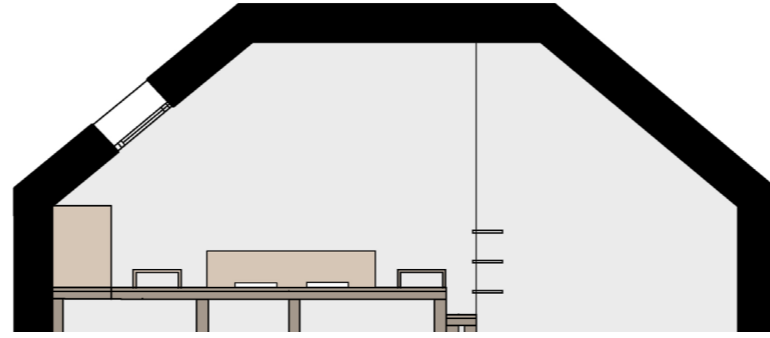
utilisation de la cheminée comme dos de lit



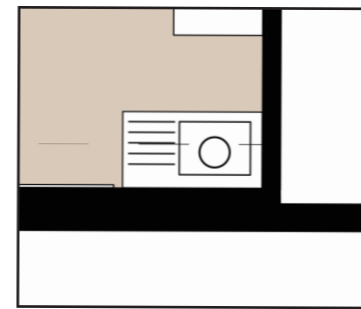
utilisation des conduites d'eau
(salle de bain, cuisine, sanitaires)



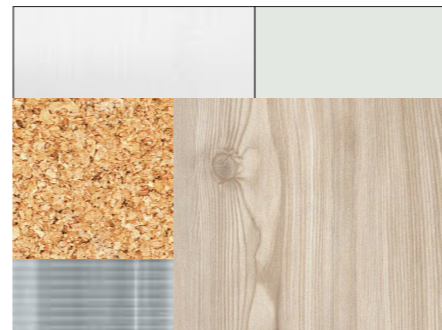
éphémère



restanques facilement amovibles



évier provisoire avec bonbonne d'eau dans
l'atelier du peintre



matériaux légers

Recyclage



BARAKA

atelier de menuiserie



ÉCOLE
D'ART CLAUDE
MONET
VILLE D'AULNAY
SOUS-BOIS

école d'art

Conclusion

